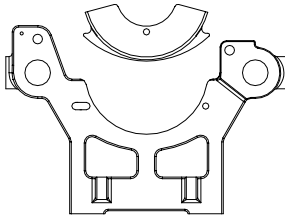
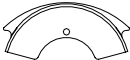
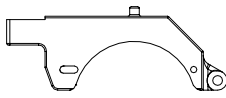


14M Model
(Formerly the TDW CF-14)

Pipe Size	Set P/N	Insert Half	Component P/N	Pipe OD
4" IPS	28-0204-6010-40	Upper	28-8204-6010-20	4.50" (114 mm)
		Lower	28-8204-6010-20	
110 mm	28-0208-6190-40	Upper	28-8204-6190-20	4.33" (110 mm)
		Lower	28-8204-6190-20	
100 mm	28-0204-6210-40	Upper	28-8204-6210-20	3.94" (100 mm)
		Lower	28-8204-6210-20	
90 mm	28-0204-6230-40	Upper	28-8204-6230-20	3.54" (90 mm)
		Lower	28-8204-6230-20	
3" IPS	28-0204-6030-40	Upper	28-8204-6030-20	3.50" (89 mm)
		Lower	28-8204-6030-20	
75 mm	28-0204-6250-40	Upper	28-8204-6250-20	2.95" (75 mm)
		Lower	28-8204-6250-20	
2-1/2" IPS	28-0204-6050-40	Upper	28-8204-6050-20	2.87" (73 mm)
		Lower	28-8204-6050-20	
63 mm	28-0204-6270-40	Upper	28-8204-6270-20	2.48" (63 mm)
		Lower	28-8204-6270-20	
2" IPS	28-0204-6070-40	Upper	28-8204-6070-20	2.37" (60 mm)
		Lower	28-8204-6070-20	



All Inserts Below Require the 28-0204-6070-40 (4" DIPS X 2" IPS) Master

2" CTS	28-0204-6370-40	Upper	28-8204-6370-20	2.13" (54 mm)
		Lower	28-8204-6370-20	
50 mm	28-0204-6290-40	Upper	28-8204-6290-20	1.97" (50 mm)
		Lower	28-8204-6290-20	
1-1/2" IPS	28-0204-6090-40	Upper	28-8204-6090-20	1.90" (48 mm)
		Lower	28-8204-6090-20	
1-1/4" IPS	28-0204-6110-40	Upper	28-8204-6110-20	1.66" (42 mm)
		Lower	28-8204-6110-20	
1-1/2" CTS	28-0204-6390-40	Upper	28-8204-6390-20	1.63" (41 mm)
		Lower	28-8204-6390-20	
40 mm	28-0204-6310-40	Upper	28-8204-6310-20	1.57" (40 mm)
		Lower	28-8204-6310-20	
1-1/4" CTS	28-0204-6130-40	Upper	28-8204-6130-20	1.38" (35 mm)
		Lower	28-8204-6130-20	
1" IPS	28-0204-6150-40	Upper	28-8204-6150-20	1.32" (34 mm)
		Lower	28-8204-6150-20	
32 mm	28-0204-6330-40	Upper	28-8204-6330-20	1.26" (32 mm)
		Lower	28-8204-6330-20	
1" CTS	28-0204-6170-40	Upper	28-8204-6170-20	1.13" (29 mm)
		Lower	28-8204-6170-20	
25 mm	28-0204-6350-40	Upper	28-8204-6350-20	0.98" (25 mm)
		Lower	28-8204-6350-20	