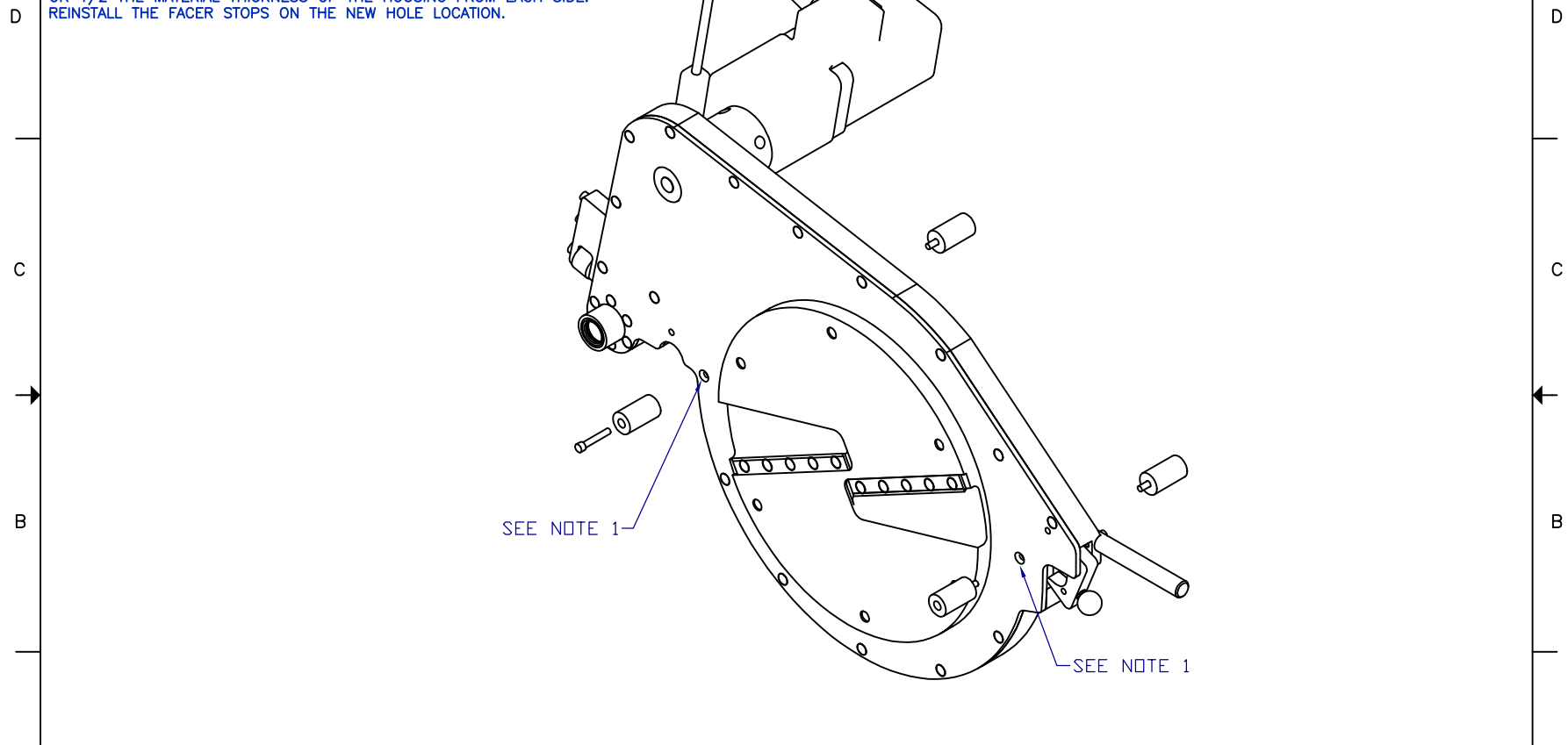


8 | 7 | 6 | 5 | 4 | 3 | 2 | 1

**NOTES:**

1. REMOVE FACER STOPS FROM EXISTING LOCATION. REMOVE TWO (2) FLAT HEAD SCREWS FROM COVER AS SHOWN AND DRILL  $\phi$ .201(#7) THRU USING EXISTING HOLES AS A PILOT. TAP 1/4-20 UNC-2B THRU OR 1/2 THE MATERIAL THICKNESS OF THE HOUSING FROM EACH SIDE. REINSTALL THE FACER STOPS ON THE NEW HOLE LOCATION.

REV		DESCRIPTION	DATE	APPROVED



SIZE	MAIN ASSEMBLY USAGE							SUB-ASSEMBLY USED ON			
	10CQ	20CQ	10EP	20EP	10HP	20HP	40	QTY	ASSEMBLY	QTY	ASSEMBLY
4	.	.	.	.	.	.	.	.	.	.	.
8	.	.	.	.	.	.	.	.	.	.	.
14	.	.	.	.	.	.	.	.	.	.	.
18	.	.	.	.	.	.	.	.	.	.	.
24	.	.	.	.	.	.	.	.	.	.	.
36	.	.	.	.	.	.	.	.	.	.	.

ALL DIMENSIONS ARE IN INCHES  
 TOLERANCES:  
 FRACTIONS: 1/8  
 DECIMALS: .06, .03 / .004, .010 /  
 ANGLES: 30°  
 FINISH: 125

**CONNECTRA**  
 simply fusion

FACER STOP CHANGE, 314

APPR: .	DATE: .	DRW: D.L.WEST	REV: .	REV: .	REV: .
CHECKED: .	DATE: .	DATE: 06/15/05	DATE: .	DATE: .	DATE: .

8 | 7 | 6 | 5 | 4 | 3 | 2 | 1